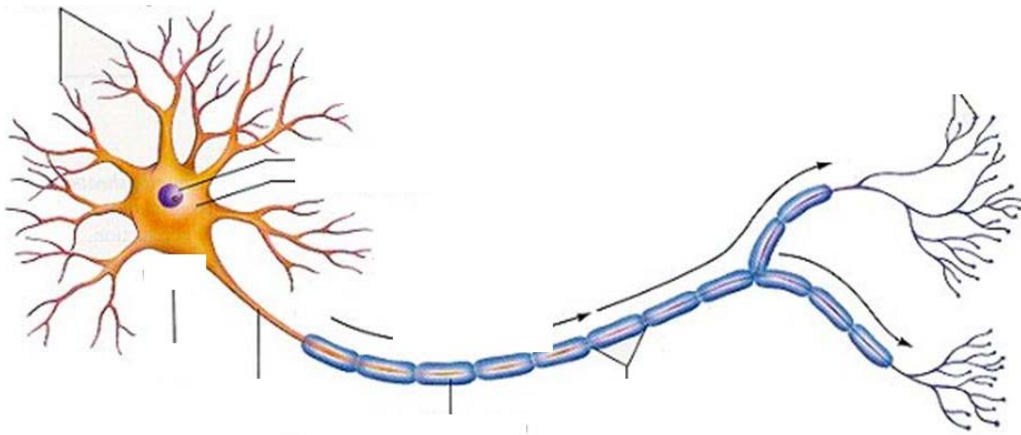


BRAIN QUIZ

1. The picture below represents a single nerve cell or neurone. Label the important parts of this cell.

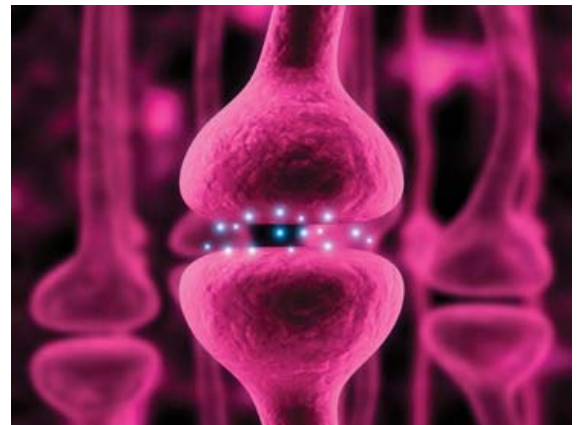


2. Which type of cell in your body has the longest axon?

3. Typically, what is the diameter of a nerve cell body?

4. What is the junction between two nerve cells called?

5. Nerve cells communicate by releasing a chemical which diffuses across the gap between the two cells and activates specific 'receptors' on the next nerve cell in the circuit. Name one of the chemicals that are used by the brain for this chemical neurotransmission.



6. Name a famous male neuroscientist. What was/is he famous for?

7. Name a famous female neuroscientist. What was/is she famous for?

8. How many Nobel prizes have been won by scientists who have used *C. elegans* as their experimental model?

9. What is the chemical formula of ethanol?

10. Which part of the brain is particularly important in memory?

11. How long can *C. elegans* live for?

12. Name two different techniques that can be used to image the human brain.

13. What are the electrical signals that travel along an axon called?



14. Name a genetic disorder of the nervous system.

15. What type of cell in the brain has a name that means 'glue'?

16. What are endorphins?

17. How many people in the UK have dementia?

18. What might happen to an individual that suffered damage to the temporal lobe of the brain?

19. Which cells of the eye enable you to see at night?

20. Have you learnt anything while you were doing this quiz? How do you think this knowledge is stored in your brain?